

# Wisconsin Department of Agriculture Trade and Consumer Protection Division of Food and Recreational Businesses



FOOD SAFETY SUPERVISOR JIM PIKKA

## Discuss the following issues that are being observed on farm

- Chart Recorders on Farms
- Calibration of Chart Recorders
- Partial Pickups
- Canning off of Milk at Farms



# Chart Recorders for Bulk Tanks

What Documentation is needed?

# What does ATCP 65 state about chart recorders

ATCP 65.16(2)(c) A bulk tank shall be equipped with all of the following:

1. An indicating thermometer that has a range of at least 32° F. to 80° F.
2. A temperature recording device approved by the division, if the bulk tank was manufactured after January 1, 2000. The temperature recording device shall comply with sub. (3).

# What documentation needs to be on chart recorders on the farm

ATCP 65.16(3)(c) The milk producer shall retain milk temperature records for at least 6 months after the temperature recording device makes those records. Milk temperature records shall identify the milk producer, the date or dates to which the records pertain, the bulk tank to which the records pertain if there is more than one bulk tank on the dairy farm, the signature of the person who removed the temperature records from the temperature recording device, and any unusual occurrences related to milk temperature.

## Calibration of the Chart recorders

ATCP 65.16(2)3(d) The dairy plant operator who procures milk from the milk producer, or a milk contractor who procures milk from the milk producer, shall calibrate the temperature recording device every 6 months, or more often if specified by the manufacturer, and shall keep complete and accurate records of the calibration. The dairy plant operator shall make the records required under this section available to the division for inspection and copying upon request.



Any Questions on Chart Recorders?

Now onto Partial Pick-ups of milk

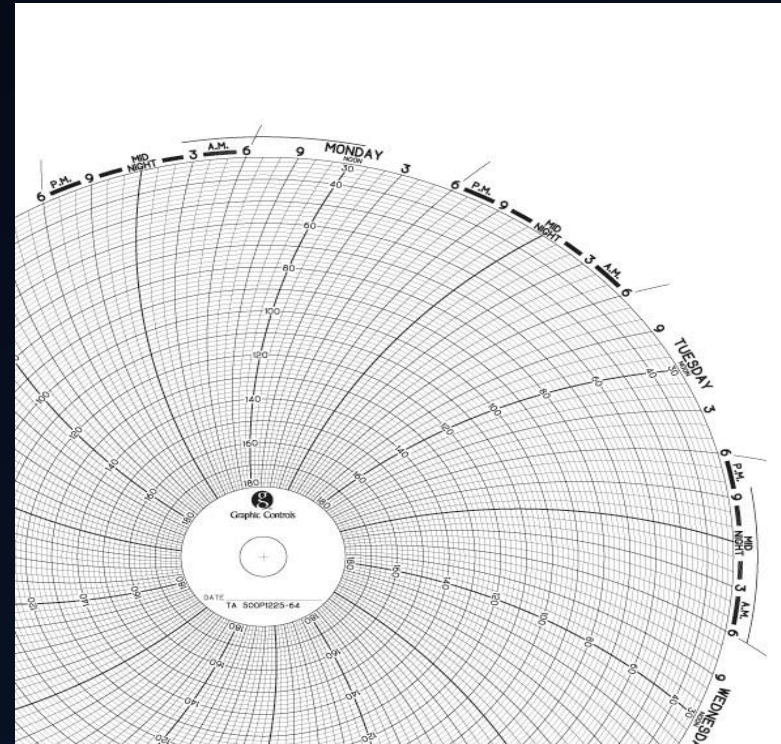
## Partial pickups of milk at farms

- ATCP 82.10(11)(am) Partial removal of milk from the bulk tank shall be permitted if all the following apply:
  1. The bulk tank is equipped with a 7 day recording device approved by the department as specified in ATCP65.14(6).
  2. The bulk tank is cleaned and sanitized when emptied.
  3. The bulk tank is emptied at least every 72 hours.
  4. The bulk milk weigher and sampler indicates the time and date on the recorder chart when a partial pickup is made and when the bulk tank is emptied.

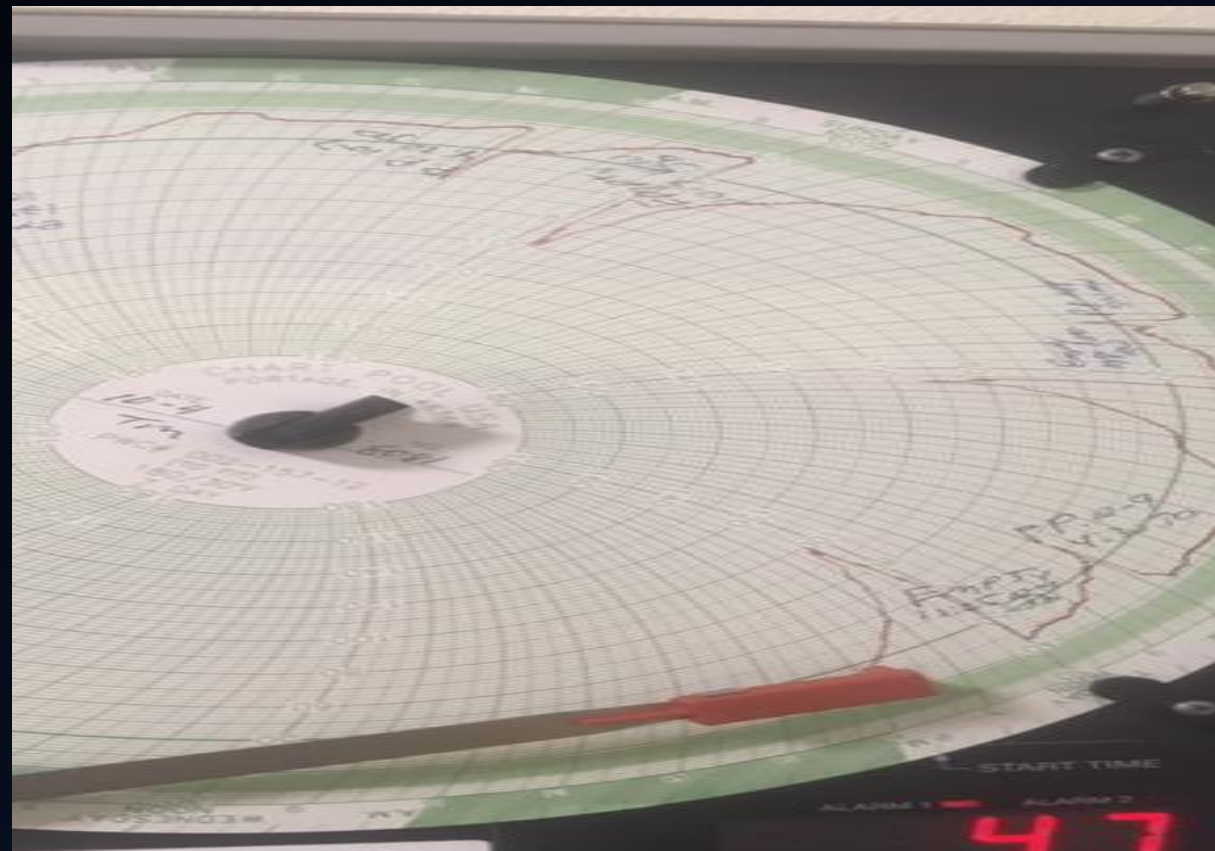


# Partial pickups of milk

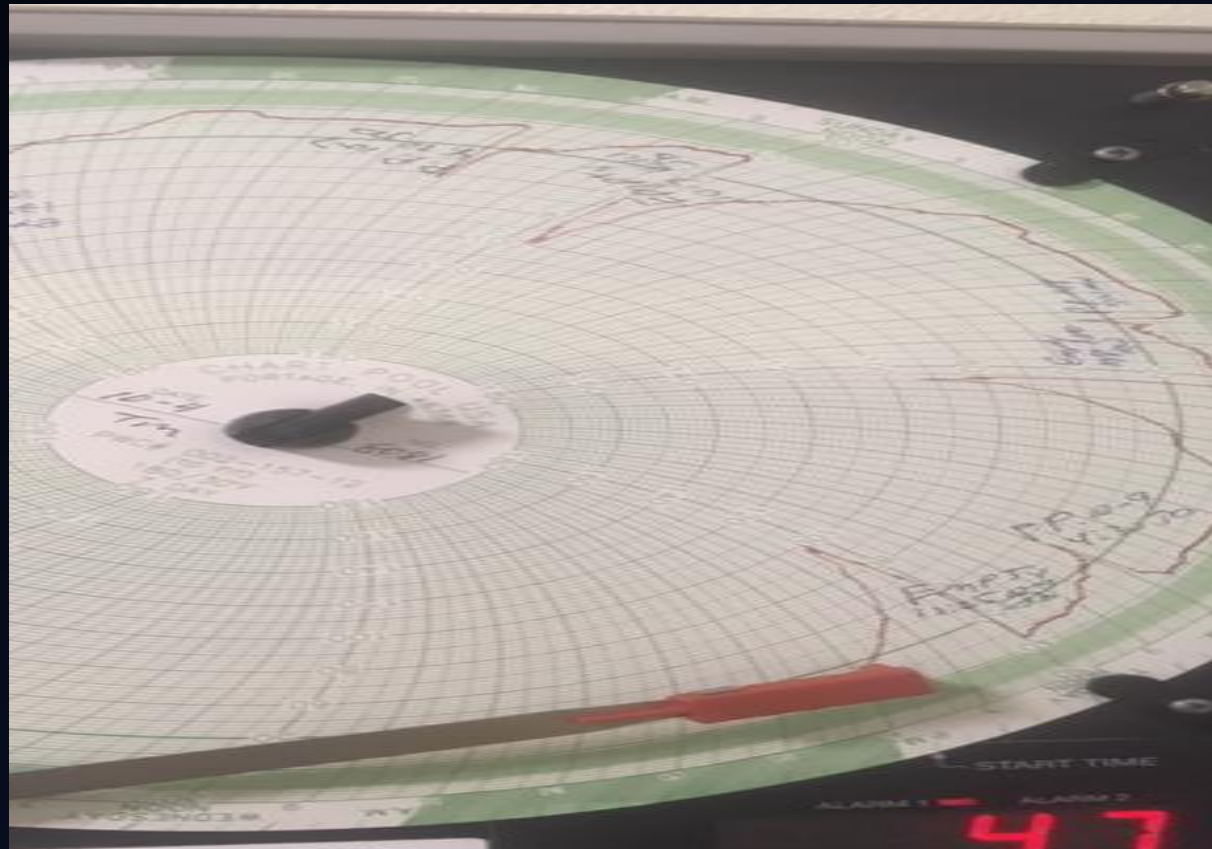
The bulk tank is equipped with a 7 day recording device approved by the department as specified in ATCP65.14(6).



1. The bulk tank is cleaned and sanitized when emptied.
2. The bulk tank is emptied at least every 72 hours.
3. The bulk milk weigher and sampler indicates the time and date on the recorder chart when a partial pickup is made and when the bulk tank is emptied.



Again these chart recorders need to meet the requirements as we stated in ATCP 65.16(2)(c), 65.16(3)(c) & 65.16(2)3(d)

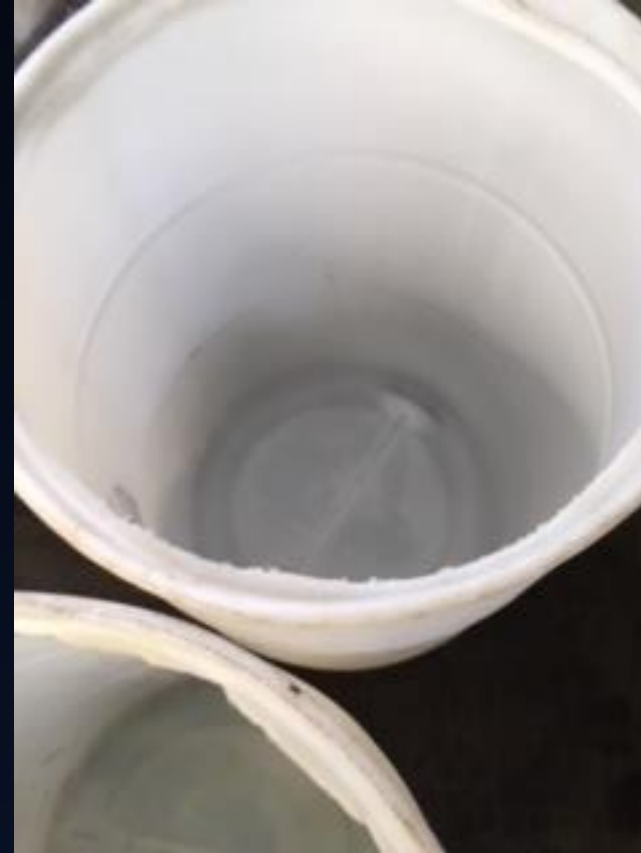


# Canning off of Milk at Farms

We have been seeing a number of farms storing milk in barrels or other storage containers in the milkhouses.



# Maximum levels of milk in bulk tanks



# Measuring the milk in the Bulk Tank

**ATCP 82.10(8) MEASURING MILK IN THE BULK TANK.** (a) Before milk is transferred from a dairy farm bulk tank to a bulk milk tanker, the bulk milk weigher and sampler shall accurately measure the amount of milk in the bulk tank. The bulk milk weigher and sampler shall measure the milk using a gauge rod or other measuring device that is specifically designed and calibrated to measure milk in the bulk tank.

# Maximum levels of milk in bulk tanks

50  
49  
48  
47



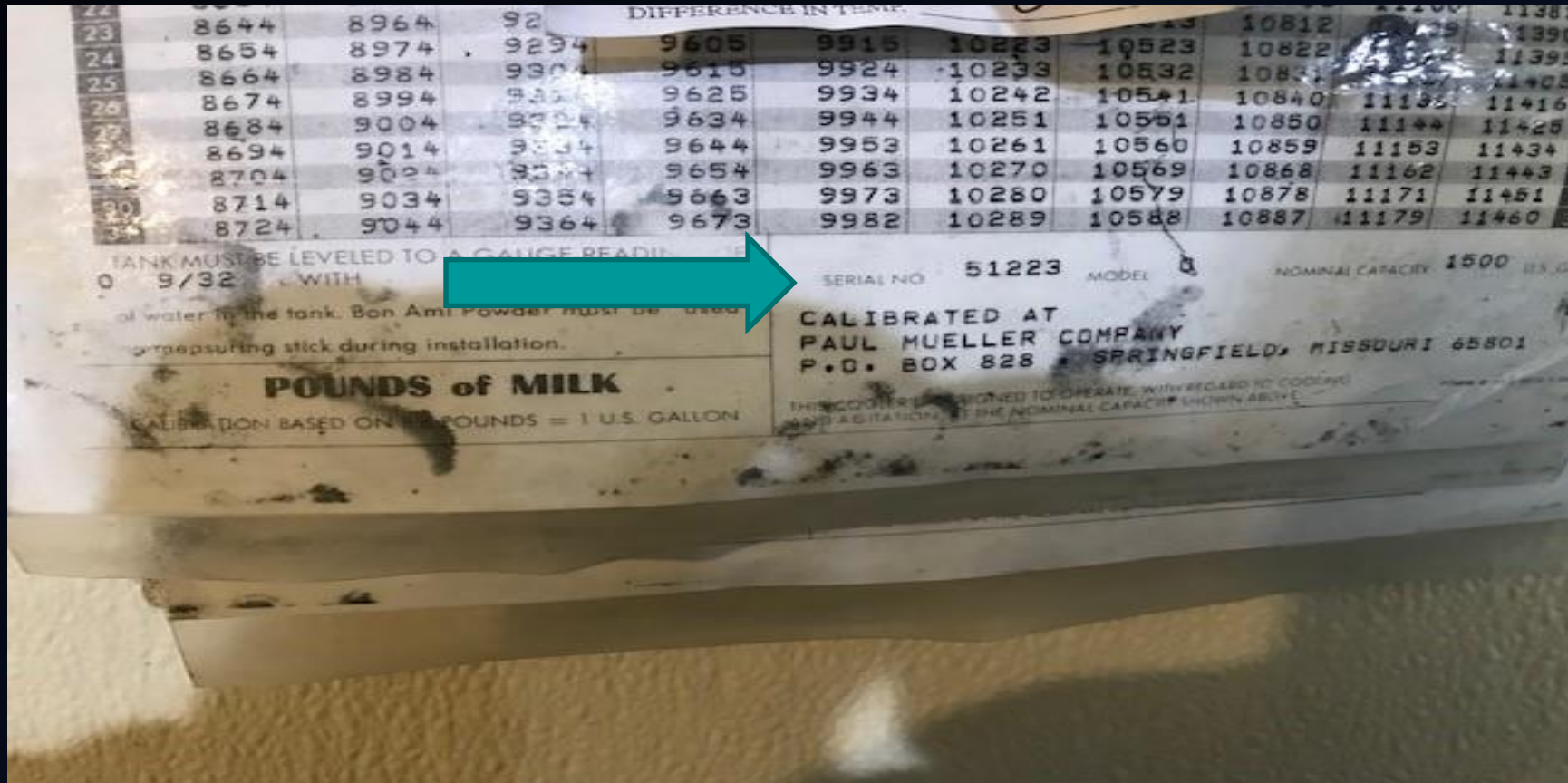



# Maximum levels of milk in bulk tanks

46 IN	47 IN	48 IN	49 IN	
12974	13191	13385	13566	0
12981	13197	13391	13571	1
12988	13204	13397	13577	2
12995	13211	13403	13582	3
13002	13217	13409	13588	4
13009	13224	13415	13593	5
13016	13230	13421	13599	6
13023	13236	13427	13604	7
13029	13242	13433	13610	8
13036	13248	13439	13616	9
13043	13254	13445	13621	10
13049	13260	13450	13627	11
13056	13266	13456	13632	12
13063	13272	13461	13638	13
13070	13278	13467	13643	14
13076	13284	13472	13649	15
13083	13290	13478	13654	16
13090	13296	13483		17
13096	13302	13489		18
13103	13308	13494		19
13110	13314	13500		20
13117	13320	13505		21
13123	13326	13511		22

	LBS	S.R.	TEMP.	TIME	HAULE INITIAL
1	6621	24-16	39	2:45	US
2	6621	24-16	39	10:50	Qm
3	6559	24-16	39	3:30	US
4	6436	23-30	39	9:45	Qm
5	6528	24-7	39	2:30	US
6	6661	24-20	39	10:50	US
7	6436	23-30	39	3:15	US
8	6498	24-4	38	9:50	Qm
9	6395	23-26	39	3:30	US
10					
11	12947	45-28	39	3:20	US
12					
13	12735	44-30	39	2:55	US
14					
15					
16					
17					
18					

The conversion chart must match the make, serial number and model of the bulk tank





If sanitarians observe any evidence of canning off of milk they are asked to take photos of all of the following:

- \*Weight Tickets
- \*Conversion Chart
- \*Measuring stick or sight glass
- \*All hauler information (License Numbers)
- \*Full or empty clean barrels

Then the supervisors will forward all evidence to our compliance staff to handle.

## Maximum levels of milk in bulk tanks

**ATCP 82.16 False samples or records.** No person may do any of the following, or conspire with another person to do any of the following: **(1)** Falsely identify any milk sample. **(2)** Submit a false or manipulated milk sample to a dairy plant operator or testing laboratory. **(3)** Submit, to a dairy plant operator or testing laboratory, a milk sample collected in violation of this chapter. **(4)** Misrepresent the amount of milk collected from a dairy farm, or falsify any record or report required under this chapter.

# QUESTIONS?

Food Safety Supervisor Jim Pikka

715-610-4513

[James.pikka@Wisconsin.gov](mailto:James.pikka@Wisconsin.gov)