

The background of the slide is a light gray gradient with several realistic water droplets of various sizes scattered across it. The droplets have highlights and shadows, giving them a three-dimensional appearance. The main text is centered on the slide.

REGULATORY UPDATE

TARA ALBEDYLL; REGULATORY
SPECIALIST, SENIOR (608)224-4727

COMPLIANCE GRADE B FARM PROCESS

- IF A REINSPECTION IS ISSUED THE SANITARIAN AT THE ROUTINE THEY WILL REINSPECT NOT LESS THAN 3 DAYS NOR MORE THAN 90 DAYS AFTER THE REINSPECTION NOTICE IS ISSUED.
- IF THE SANITARIAN FINDS THAT THE VIOLATIONS THAT LED TO THE ISSUANCE OF THE REINSPECTION NOTICE HAVE NOT BEEN CORRECTED DURING THE REINSPECTION, THEN COMPLIANCE IS NOTIFIED THAT A WARNING LETTER IS NEEDED BASED ON TWO REINSPECTION NOTICES ISSUED.

- COMPLIANCE MAILES OUT A COPY OF THE WARNING LETTER TO THE FARMER AND THE DAIRY PLANT.
- THE SANITARIAN CONDUCTS THE REINSPECTION AND IF ANOTHER REINSPECTION IS ISSUED THEN AN ADMINISTRATIVE CONFERENCE IS REQUIRED
- DURING THE ADMINISTRATIVE CONFERENCE, PARTIES MUTUALLY AGREE ON A TIMEFRAME FOR THE RESPONDENT TO GAIN COMPLIANCE.
- COMPLIANCE WRITES AN ADMINISTRATIVE CONFERENCE SUMMARY LETTER TO THE RESPONDENT AND EMAILS A COPY TO STAFF. THE LETTER WILL INCLUDE A DATE FOR STAFF TO CONDUCT A CHARGEABLE REINSPECTION

- STAFF/SUPERVISOR CONDUCT THE REINSPECTION ON OR AFTER THE DATE IT IS DUE.
 - IF THE RESPONDENT GAINED COMPLIANCE, THE CASE IS CLOSED.
 - IF THE RESPONDENT HAS NOT GAINED COMPLIANCE, COMPLIANCE MOVES TO LEGAL ACTION.
-
- CONDITIONAL LICENSE

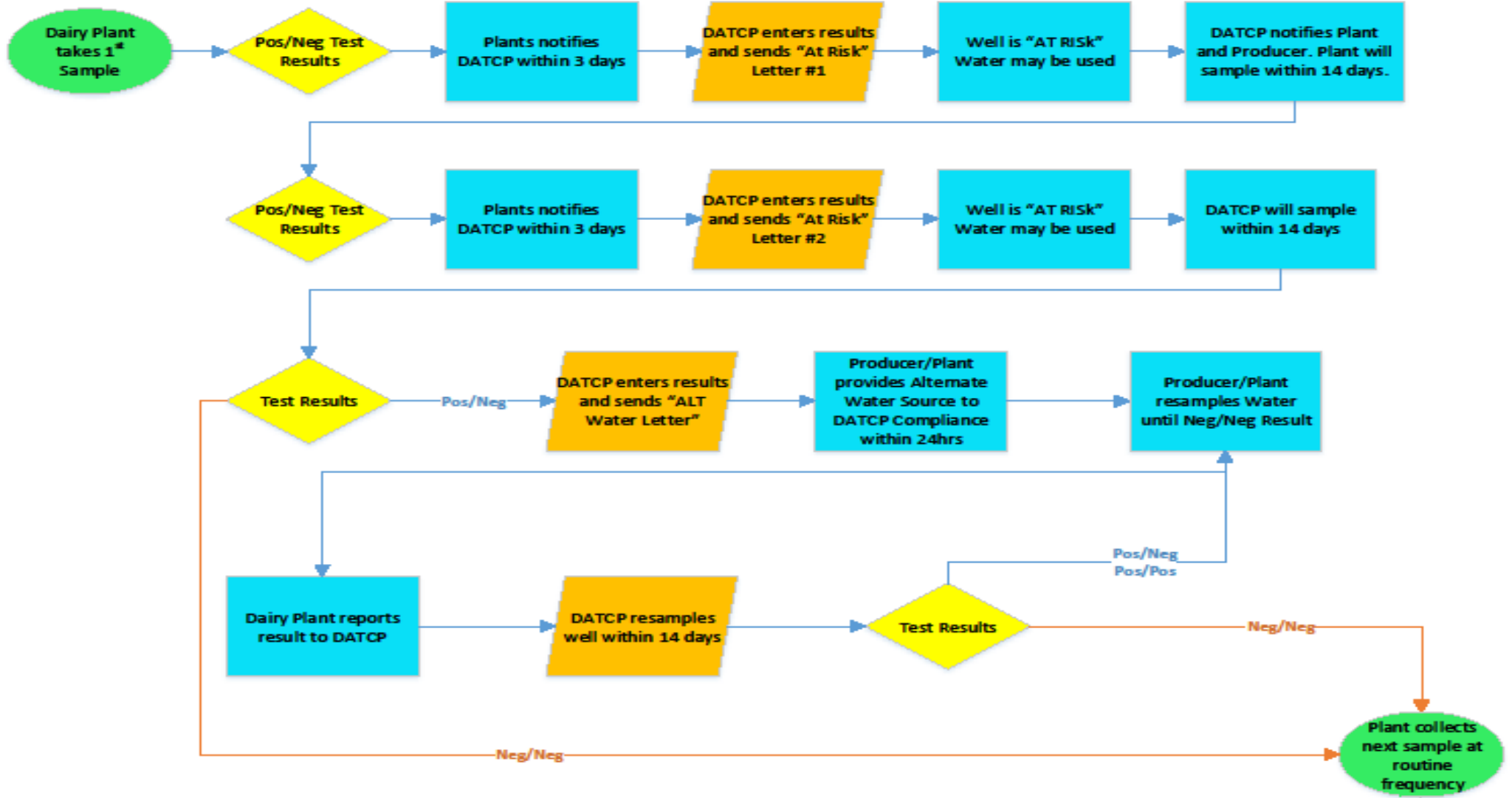
GRADE B COUNTS

- GRADE B PRODUCERS WITH MORE THAN 40 SOMATIC CELL COUNT VIOLATIONS, MORE THAN 20 STANDARD PLATE COUNT VIOLATIONS, OR A COMBINATION OF MORE THAN 25 SOMATIC CELL COUNT VIOLATIONS AND 15 STANDARD PLATE COUNT VIOLATIONS CONSTITUTES LEGAL ACTION BEING TAKEN.
- COMPLIANCE WILL SET UP ENFORCEMENT CONFERENCE HELD AND PRESENT LEGAL DOCUMENTS FOR A TWO YEAR CONDITIONAL LICENSE. FIELD REP ALSO ATTENDS THESE MEETINGS

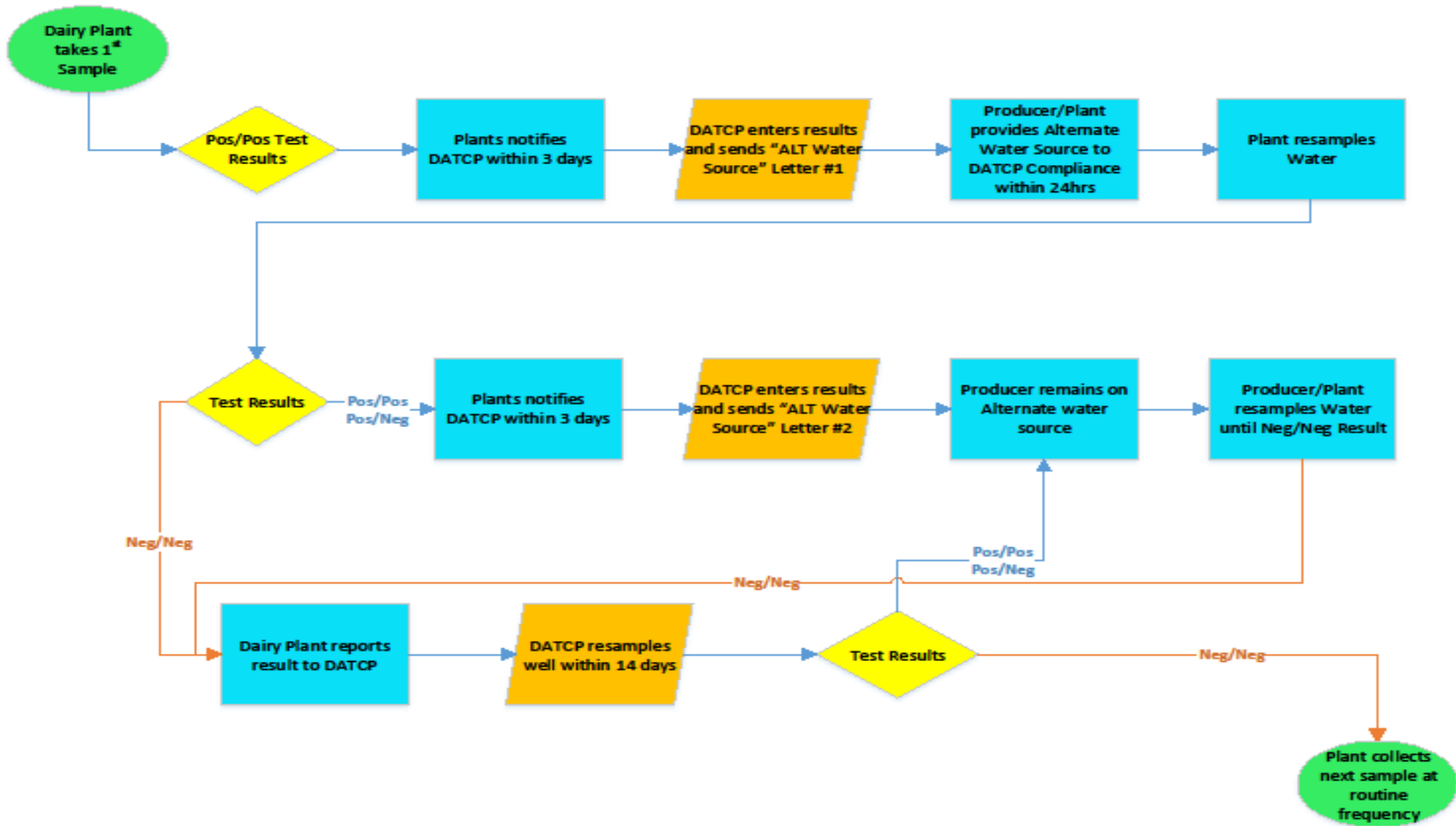
WATER PROCESS FOR POTABLE WATER ON FARMS

- **ATCP 65.10 DAIRY FARM WATER SUPPLY.**
- [ATCP 65.10\(1\)](#) (1) GENERAL. AN ADEQUATE SUPPLY OF POTABLE WATER SHALL BE SUPPLIED UNDER PRESSURE FOR MILKHOUSE AND MILKING OPERATIONS. WATER USED FOR MILKHOUSE AND MILKING OPERATIONS, INCLUDING WATER USED TO COOL MILK IN A PLATE OR TUBULAR COOLER, SHALL BE POTABLE. POTABLE WATER SHALL COMPLY WITH THE MICROBIOLOGICAL DRINKING WATER STANDARDS SET FORTH IN S. [NR 809.30](#).

"At Risk" Potable Water Samples



"Positive/Positive" Potable Water Samples



- **2019** ~ AS OF AUGUST 26, 2019, THERE ARE 96 DIFFERENT FARMS WITH WATER ISSUES (AT RISK OR ALTERNATIVE WATER SOURCE)
- **2018** ~ HAD 112 WATER CASES THERE WERE AT RISK/ALTERNATIVE WATER
- **2017** ~ HAD 140 WATER CASES THERE WERE AT RISK/ALTERNATIVE WATER
- **2016** ~ HAD 11 WATER CASES ONLY!

HEARING REQUESTS

- FARMERS CAN REQUEST A HEARING BASED ON A NOTICE OF INTENT TO REINSPECT AND/OR DEGRADE OF THE GRADE A PERMIT BASED ON FARM SITE CONDITIONS.
- FARMERS CAN REQUEST A HEARING ON A POSITIVE DRUG RESIDUE LAB RESULT. EAU CLAIRE OFFICE ISSUES THE LETTER AND THE FARMER HAS 10 DAYS TO REQUEST A HEARING IN WRITING.
- FARMERS CAN REQUEST A HEARING ANYTIME COMPLIANCE TAKES LEGAL ACTION ON ONES LICENSE (WITHOUT A STIPULATION WHICH IS AN AGREEMENT BETWEEN DATCP AND FARM/PLANT/HAULER ETC).

QUESTIONS